

## Gateway Encryption Outlook Plugin 3.1.1 Release Notes

The following release notes contain important information regarding the Gateway Encryption Plugin 3.1.1 for Microsoft Outlook.

### New in version 3.1.1

#### Bug Fixes

- Outlook crashes when the user right-click on the Categories Label and then right-click again anywhere else (Outlook 2013 only).

#### Known Issues

- If the user right-clicks on the Flag or Categories Label for a single message in the Outlook 2013 messages list, then immediately right-clicks again on the same message, the Gateway Encryption Plugin menu items do not appear in the context menu.
- The Gateway Encryption plugin displays inconsistent behavior when handling incoming messages for POP or IMAP account in Outlook (Auto-categorization fails intermittently for POP3 and IMAP accounts).  
For the optimal user experience, use an Exchange account.
- The Gateway Encryption plugin uses custom MIME headers to automatically categorize incoming messages from other Gateway Encryption plugin users. By default, Outlook does not preserve these headers when delivering messages from an Exchange account to a POP3 or IMAP account.

The Exchange admin can use the Exchange Web Service (EWS) to provision the following headers:

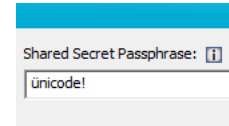
- x-echoworx-encrypt
- x-echoworx-pre-shared-key
- x-echoworx-pre-shared-key-hint
- x-echoworx-portal-psk-reply
- x-echoworx-portal

For more information on provisioning headers using EWS, see <http://msdn.microsoft.com/en-us/library/office/dn596091%28v=exchg.150%29.aspx>

## Previous Versions

### Version 3.1

- **Unicode support for Shared Passphrase Encryption**  
You can use Unicode (UTF-8) characters in your *Shared Secret Passphrase* or passphrase hint.



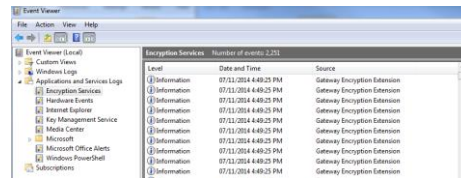
- **Automatically trigger the Shared-Passphrase prompt for replies to Shared-Passphrase messages**

When you send a message using Shared-Passphrase encryption, you will be prompted to select a Shared Passphrase for all subsequent messages in the same thread.

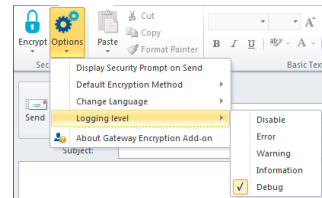
**Note:** This feature is not compatible with Microsoft Outlook 2003

- **Improved Logging**

The Gateway Encryption Plugin installer creates a new event provider called *Gateway Encryption Extension* under *Encryption Services*.



To change the log level for Gateway Encryption Extension events, select **Options > Logging Level**.



### Bug Fixes

- The *display passphrase* option does not work with POP and IMAP accounts.
- Office Apps become unresponsive when sending document via *Send as Attachment*.
- When both the *Gateway Encryption* and *Encrypted Mail* plugins are installed, duplicate copies of *Encrypted Mail* plugin Digital Courier messages remain in outbox after sending.
- The *Encrypt* button is not auto-pushed when replying to a message in a POP3 account in Outlook 2007.

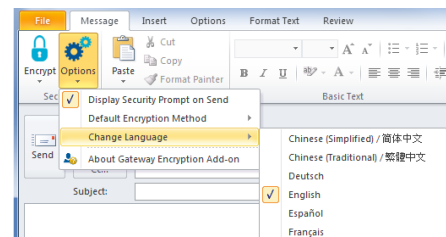
### Version 3.0

- **Fully translated in 13 languages**

The Gateway Encryption Add-in is translated into thirteen languages. The installer selects the appropriate language at installation time.

To change the language manually, select **Options > Change Language > [your language]**.

*This feature is only available for Outlook 2007 and newer.*



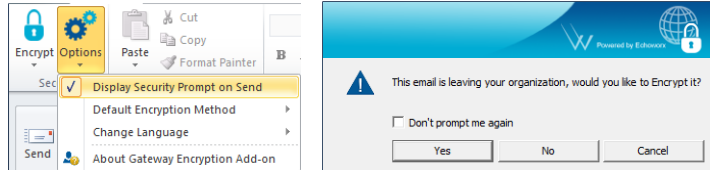
- **Updated Icons**

The Encrypt icon is updated to differentiate the Gateway Encryption add-in from the Echoworx Encrypted Mail add-in.



➤ **Optional reminder to encrypt messages outside your organization**

When the optional security prompt is enabled, the plugin offers to flag for encryption any message to an outside domain.



To enable/disable the security prompt, select **Options > Display Security Prompt on Send**.

*This feature is only available for Outlook 2007 and newer.*

➤ **Automatically categorize incoming messages**

If an incoming message was flagged for encryption by the sender, the message is tagged with the appropriate categories (Gateway Encryption/Shared-Passphrase Encryption) in your inbox.

➤ **Automatically encrypt replies to sensitive messages**

Replies to messages in the Gateway Encryption category are automatically flagged for encryption.

➤ **Change your default encryption method**

You can change the default encryption method for all new messages. To change the default encryption method, select **Options > Default Encryption Method > [Encryption Method]**.

**Warning:** changes to the default encryption method affect new messages only. Any messages open when the change is made are not affected.

*This feature is only available for Outlook 2007 and newer.*

➤ **Automatically re-enable the plugin when disabled due to an exception**

At Outlook start, if the add-in is disabled, the user is prompted to click to re-enable the plugin.

### Bug Fixes

- If the passphrase contains an exclamation mark, the plugin allows the passphrase to appear in the passphrase hint.

### Version 2.1.1

➤ **Common header tag for all messages**

To prevent the need for creation of extra rules in environments where an external rule engine routes messages to the Echoworx gateway, the *x-echoworx-encrypt* header tag, which was previously applied only to web portal messages, is applied to all gateway-encrypted messages. Note that the additional *x-echoworx-pre-shared-key* tag is still applied to Question & Answer portal and Encrypted PDF messages.

➤ **Set category names via MST transform**

You can rename the *Gateway Encryption* and *Shared Passphrase* custom categories at install time via MST transform. For more information about the available customization options, see *Customizing the Echoworx Gateway Encryption plugin.pdf*.

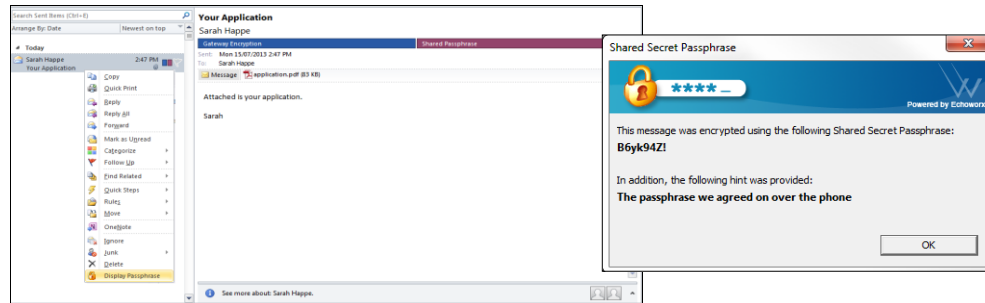
## Version 2.1

➤ **Automatic categorization of encrypted messages.**

When you send a secure message with the Gateway Encryption plugin, the sent message is assigned to one of two custom categories: *Gateway Encryption* for regular encrypted messages and *Shared Passphrase* for Encrypted PDF or Question/Answer web portal messages encrypted with a shared secret passphrase.

➤ **Show passphrase for sent items**

You can right click on a message categorized as *Shared Passphrase* and select *Display Passphrase* to view the Shared Passphrase for that message.



➤ **Passphrase strength policies**

The plugin can be configured, via MSI install or Group Policy registry push, to enforce certain passphrase strength policies for messages that use a Shared Passphrase. The following policies can be configured

- Minimum length
- Maximum length
- Passphrase cannot be part of the passphrase *hint*
- Uppercase character required
- Lowercase character required
- Number required
- Special character required

For more information on configuring these policies for your enterprise, see the *Customizing the Echoworx Gateway Encryption Plugin* PDF document.

➤ **Remember previous passphrase hint**

The plugin can be configured to remember the current passphrase hint for future use – check the *Remember* box on the passphrase entry window.

### Bug Fixes

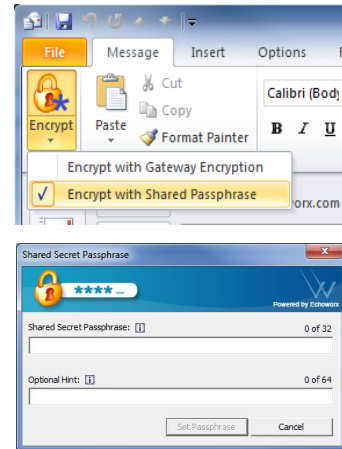
- Fixed an error caused by a conflict with the Echoworx Encrypted mail Outlook plugin.

## Version 2.0

- **Support for PSK encryption.**

If your Enterprise has a subscription to the PSK features in Echoworx oneWorld, the Gateway Encryption Add-In can allow the sender to specify a one-time use passphrase (also known as a PSK) at the time of sending. The passphrase chosen by the sender is used to encrypt the message in various ways. The following options are available

- Encrypt the message body and all attachments and store them in a secure PDF file
- Encrypt only the attachments and store them in secure PDF file(s)
- Encrypt only the attachments and store them in secure ZIP file(s)



➤ **Outlook 2013 / Windows 8 support**

Version 2.0 of the Gateway Encryption Plugin has been tested and is fully compatible with Microsoft Outlook 2013 and Windows 8.

➤ **New icons for Outlook 2013**

The application icons are updated for the simplified look of Outlook 2013.

➤ **Watermarked install package**

The install graphics, button tooltip, and Shared Secret Passphrase dialog now include a “powered by Echoworx” watermark to assure user’s that they are using top-notch encryption software from an industry leader.

**Bug Fixes**

- Running the Repair operation (from the *uninstall programs* control panel ) no longer deletes the plugin dll.

## Gateway Encryption Plugin Requirements

<b>Operating System</b>	Microsoft™ Windows® XP Windows® Vista Windows® 7 Windows® 8 *the latest service pack is recommended for all operating systems.
<b>Email Client</b>	Microsoft™ Outlook® 2003/2007/2010/2013
<b>Internet Connection</b>	Minimum 56 Kbps dial-up modem LAN-based using standard TCP/IP DSL, ADSL, Cable Modem
<b>Hardware</b>	20 MB of free hard drive space

